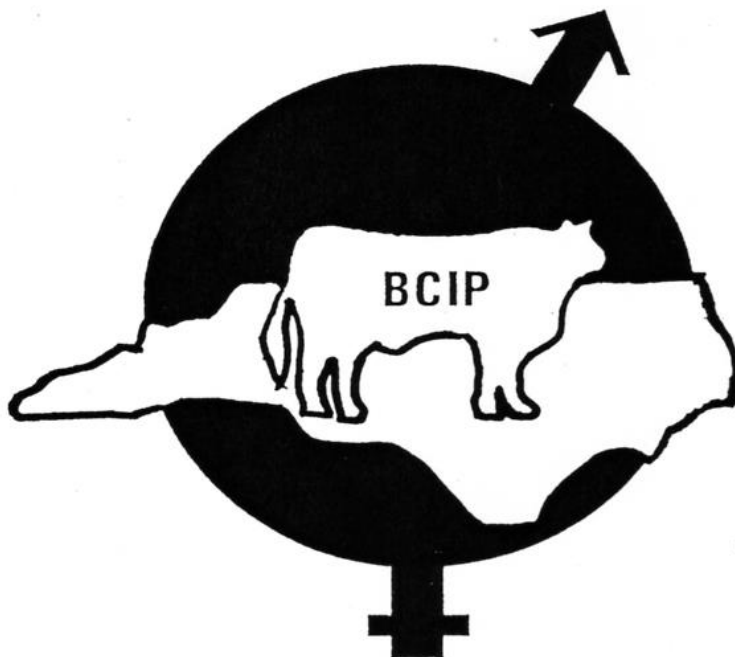


Fortieth Annual

North Carolina BCIP

Waynesville Bull Test Sale



Saturday, December 7, 2019

11:00 am

Selling 32 Bulls

26 Angus, 6 Simmental and Simmental x Angus

WNC Regional Livestock Center (11:00 am)

Canton, North Carolina

919/422-9108

919/795-9696



Gary Gregory 919/515-4027



Will Morrow, MRS Supt.
Kyle Miller, Lvstk. Mgr.
828/456-3943



Bryan Blinson 919/552-9111

**Waynesville Bull Test Sale Order
2019**

Tag	Weight 10/29	Price	Tag	Weight 10/29	Price
Angus			Simmental		
7	1290		56	1228	
23	1220		53	1220	
33	1133		57	1148	
6	1278		Angus		
8	1263		1	1083	
43	1200		19	1158	
20	1208		21	1105	
5	1168		4	1153	
38	1108		15	1110	
41	1165		40	1028	
29	1160		42	1133	
17	987		35	1188	
22	1110		34	1005	
Simmental			18	932	
55	1283		27	1080	
54	1253		32	1065	
51	1293		2	1118	

Waynesville Consignor Index

<u>Angus (26)</u>	<u>Phone Number</u>	<u>Tag Number</u>
BGS Angus	423.335.5631	1
William Baird - Baird Angus	423.79.9011	2, 4, 5
Carl Blanton - 3J Angus	704.472.2500	6, 7, 8
Chuck Broadway - Broadway Cattle Farm	704.579.3514	15
Mike Connatser - J&M Windy Acres	865.414.7885	17, 18
Buddy Hamrick - H&H Farm	704.472.1912	19, 20, 21, 22, 23
Tommy McGee - Evening Star Ranch	828.244.8827	27, 29
Dennis Overcash - Overcash Angus Farm	704.663.2547	32, 33, 34
Eugene Shuffler - Shuffler Farm	704.539.4161	35, 38
Homer Stout - Rainbow Farm	423.335.5631	40
George Williams - Williams Angus	423.341.7044	41, 42, 43
 <u>Simmental/SimmentalxAngus (6)</u>		
Chuck Broadway - Broadway Cattle Farm	704.579.3514	51
Landon Keziah - Keziah Farms	980.240.4891	53
Phil & Jennie Rucker - Rucker Family Farm	336.468.1675	54, 55
Eugene Shuffler - Shuffler Farm	704.539.4161	56, 57

1 BGS INSIGHT 855 (AN GS) ANGUS
 Reg. No. 19495360 Tattoo 855 DOB 9/30/18 PB
 Consignor BGS ANGUS, PINEY FLATS TN, 423.335.5631

INDIVIDUAL PERFORMANCE										
	BW	WW	ADG	YW	YH	END WT	SC	U%IMF	URE	UFAT
Perf	83		2.95	1009	50.3	1083	38	2.93	9.6	.09
Ratio/FS			107	101	5.6					

SAV BRILLIANCE 8077
 PVF INSIGHT 0129 16805884
 PVF MISSIE 790
 SITZ UPWARD 307R
 BGS BLACKCAP 716 18042890
 BGS BLACKCAP

PRODUCTION EPD						MATERNAL EPD							
CED	BW	WW	YW	ADG	YH	SC	DOC	HP	CEM	MM	MW	MH	\$EN
0	2.1	56	99	.25	.5	.43	11	11.9	-2	28	38	.2	-10
FEET			CARCASS EPD				\$ VALUES						
CLAW	ANG	CWT	MRB	RE	FAT	\$M	\$W	\$F	\$G	\$B			
.48	.48	50	.10	.83	.003	53	62	103	31	134			

2 WDB MR HI W 208 151L 1841 ANGUS
 Reg. No. 19444416 Tattoo 1841 DOB 8/8/18 PB
 Consignor BAIRD ANGUS FARM, BLUFF CITY TN, 423.579.9011

INDIVIDUAL PERFORMANCE										
	BW	WW	ADG	YW	YH	END WT	SC	U%IMF	URE	UFAT
Perf	73	675	2.56	947	49.7	1118	39	3.93	11.3	.03
Ratio/FS			93	94	5.3					

PLATTEMERE WEIGH UP K360 (RDF)
 EWA HIGH WEIGH 3123 17816333 (RDF)
 EDGEWOOD JAUNTY 128
 SAV BISMARCK 5682 (RDF)
 WDB MISS BISMARCK 208 1511
 WDB DIV 05 5204 208

PRODUCTION EPD						MATERNAL EPD							
CED	BW	WW	YW	ADG	YH	SC	DOC	HP	CEM	MM	MW	MH	\$EN
7	0.5	47	89					9	23				2
FEET			CARCASS EPD				\$ VALUES						
CLAW	ANG	CWT	MRB	RE	FAT	\$M	\$W	\$F	\$G	\$B			
		32	.76	.56	-.010	60	43	85	60	146			

4 WDB MR HI W 1504 1823 ANGUS
 Reg. No. 19444420 Tattoo 1823 DOB 9/6/18 PB
 Consignor BAIRD ANGUS FARM, BLUFF CITY TN, 423.579.9011

INDIVIDUAL PERFORMANCE										
	BW	WW	ADG	YW	YH	END WT	SC	U%IMF	URE	UFAT
Perf	76	840	2.63	1036	49.2	1153	38	4.06	10.5	.06
Ratio/FS			96	103	5.1					

PLATTEMERE WEIGH UP K360 (RDF)
 EWA HIGH WEIGH 3123 17816333 (RDF)
 EDGEWOOD JAUNTY 128
 SAV BISMARCK 5682 (RDF)
 WDB MISS BISMARCK 1230 1504 18193318
 WDB MISS 0802 346 1230

PRODUCTION EPD						MATERNAL EPD							
CED	BW	WW	YW	ADG	YH	SC	DOC	HP	CEM	MM	MW	MH	\$EN
6	1.4	68	120					10	25				-15
FEET			CARCASS EPD				\$ VALUES						
CLAW	ANG	CWT	MRB	RE	FAT	\$M	\$W	\$F	\$G	\$B			
		43	.75	.49	.005	79	65	98	58	156			

5 WDB MR LEUPOLD 421 ANGUS
 Reg. No. 19444421 Tattoo 1824 DOB 9/11/18 PB
 Consignor BAIRD ANGUS FARM, BLUFF CITY TN, 423.579.9011

INDIVIDUAL PERFORMANCE										
	BW	WW	ADG	YW	YH	END WT	SC	U%IMF	URE	UFAT
Perf	77	739	3.01	1061	49.9	1168	36	4.95	11.1	.11
Ratio/FS			110	106	5.4					

AAR LEUPOLD 0578
 GDAR LEUPOLD 298 17228402
 GDAR MISS BLACKCAP 9232
 BON VIEW NEW DESIGN 878
 WDB MISS 878 114 421 14749157
 WDB 7234 FOCUS 114

PRODUCTION EPD						MATERNAL EPD							
CED	BW	WW	YW	ADG	YH	SC	DOC	HP	CEM	MM	MW	MH	\$EN
10	0.6	50	88	.21	.7	.84	19	6.9	11	28	40	.3	-8
FEET			CARCASS EPD				\$ VALUES						
CLAW	ANG	CWT	MRB	RE	FAT	\$M	\$W	\$F	\$G	\$B			
.44	.36	36	.62	.29	-.007	55	55	77	50	127			

6 3J 112 OF RAMPAGE 118 (DDC) ANGUS
 Reg. No. 19424478 Tattoo 118 DOB 9/10/18 PB
 Consignor 3J ANGUS, SHELBY NC, 704.472.2500

INDIVIDUAL PERFORMANCE										
	BW	WW	ADG	YW	YH	END WT	SC	U%IMF	URE	UFAT
Perf	83	703	3.12	1137	50.3	1278	36	3.25	13.6	.08
Ratio/FS			113	113	5.7					

MCC DAYBREAK
 QUAKER HILL RAMPAGE 0A36 16925771 (RDF)
 OHF BLACKCAP 6E2 OF 4V16 4355
 H&H PRED 309
 3J 108 OF PREDESTINED 112 17288579
 H&H RITA 108 OF 0519 112

PRODUCTION EPD						MATERNAL EPD							
CED	BW	WW	YW	ADG	YH	SC	DOC	HP	CEM	MM	MW	MH	\$EN
6	2.9	68	112	.23	.6	.25	3	14.9	7	20	47	.2	-10
FEET			CARCASS EPD				\$ VALUES						
CLAW	ANG	CWT	MRB	RE	FAT	\$M	\$W	\$F	\$G	\$B			
.52	.47	50	.42	1.21	-.033	65	61	99	55	154			

7 3J-1416 OF TOP HAND 418 ANGUS
 Reg. No. 19421841 Tattoo 418 DOB 9/10/18 PB
 Consignor 3J ANGUS, SHELBY NC, 704.472.2500

INDIVIDUAL PERFORMANCE										
	BW	WW	ADG	YW	YH	END WT	SC	U%IMF	URE	UFAT
Perf	65	726	3.25	1205	51.3	1290	36	4.6	13.7	.19
Ratio/FS			118	120	6.2					

SAV BISMARCK 5682 (RDF)
 THOMAS TOP HAND 0536 16860273
 THOMAS RUBY ERICA 8293
 CONNEALY COMRADE 1385 (RDF)
 3J AND H&H MISS 114 1416 18721132
 H&H MISS 209 114

PRODUCTION EPD						MATERNAL EPD							
CED	BW	WW	YW	ADG	YH	SC	DOC	HP	CEM	MM	MW	MH	\$EN
5	-0.3	73	142	.35	.7	.40	17	9.7	10	26	95	.9	-36
FEET			CARCASS EPD				\$ VALUES						
CLAW	ANG	CWT	MRB	RE	FAT	\$M	\$W	\$F	\$G	\$B			
.61	.54	59	.67	.78	.020	39	75	118	56	174			

8 3J 215 OF TOUR OF DUTY 718 ANGUS
 Reg. No. 19421857 Tattoo 718 DOB 9/14/18 PB
 Consignor 3J ANGUS, SHELBY NC, 704.472.2500

INDIVIDUAL PERFORMANCE										
	BW	WW	ADG	YW	YH	END WT	SC	U%IMF	URE	UFAT
Perf	81	642	3.07	1133	52.4	1263	38	3.64	11.6	.11
Ratio/FS			112	113	6.7					

WERNER WAR PARTY 2417
 RB TOUR OF DUTY 177 16984170 (RDF)
 BA LADY 6807 305
 GAR NEW DESIGN 5050
 DIAMOND 2515 7815 17491586
 RITA 7815 OF RITA 5U30 878

PRODUCTION EPD						MATERNAL EPD							
CED	BW	WW	YW	ADG	YH	SC	DOC	HP	CEM	MM	MW	MH	\$EN
2	3.4	53	99	.25	.6	.34	24	9.5	9	29	78	.7	-27
FEET			CARCASS EPD				\$ VALUES						
CLAW	ANG	CWT	MRB	RE	FAT	\$M	\$W	\$F	\$G	\$B			
.44	.49	40	.49	.73	-.044	40	48	84	53	137			

15 BCIV EPIC FC64A (NHF) ANGUS
 Reg. No. 19374283 Tattoo FC64A DOB 9/16/18 PB
 Consignor BROADWAY CATTLE FARM, MONROE NC, 704.579.3514

INDIVIDUAL PERFORMANCE										
	BW	WW	ADG	YW	YH	END WT	SC	U%IMF	URE	UFAT
Perf	88	634	2.81	1002	50.5	1110	39	5.23	10.4	.13
Ratio/FS			102	100	5.7					

VARILEK PRODUCT 2010 04
 3F EPIC 4631 17950219
 ZEBO QUEEN 1072
 SITZ UPWARD 307R
 TRIPLE L UPWARD 1368-133 17854010
 TRIPLE L DANNY BOY 0648 68

PRODUCTION EPD						MATERNAL EPD							
CED	BW	WW	YW	ADG	YH	SC	DOC	HP	CEM	MM	MW	MH	\$EN
7	1.4	73	128	.25	.8	.83	17	14.2	10	22	62	.5	-18
FEET			CARCASS EPD				\$ VALUES						
CLAW	ANG	CWT	MRB	RE	FAT	\$M	\$W	\$F	\$G	\$B			
.67	.54	54	.52	.52	.034	63	75	99	44	143			

17 JMWA 225F LEGENDARY ANGUS
 Reg. No. 19448932 Tattoo 225F DOB 11/2/18 PB
 Consignor J&M WINDY ACRES, MARYVILLE TN, 865.414.7885

INDIVIDUAL PERFORMANCE										
	BW	WW	ADG	YW	YH	END WT	SC	U%IMF	URE	UFAT
Perf	74	666	3.16	997	49.6	987	38	4.91	10.0	.11
Ratio/FS			115	99	5.3					

QUAKER HILL RAMPAGE 0A36 (RDF)
 CONNEALY LEGENDARY 644L 18534952 (RDF)
 JAZZED OF CONANGA 4660
 SYDGEN CC & 7
 JMWA 225Y 912U CC & 7 17305312
 JMWA 912U 619S OBJECTIVE 0T26

PRODUCTION EPD						MATERNAL EPD							
CED	BW	WW	YW	ADG	YH	SC	DOC	HP	CEM	MM	MW	MH	\$EN
13	-.5	70	119	.25	.7	.80	13	13.3	9	20	61	.4	-19
FEET			CARCASS EPD				\$ VALUES						
CLAW	ANG	CWT	MRB	RE	FAT	\$M	\$W	\$F	\$G	\$B			
.51	.53	52	.86	.94	-.023	59	68	91	72	163			

18 JMWA 420F BLACK HAWK ANGUS
 Reg. No. 19448931 Tattoo 420F DOB 11/3/18 PB
 Consignor J&M WINDY ACRES, MARYVILLE TN, 865.414.7885

INDIVIDUAL PERFORMANCE										
	BW	WW	ADG	YW	YH	END WT	SC	U%IMF	URE	UFAT
Perf	74	686	2.67	1058	50.1	1158	39	5.02	8.2	.06
Ratio/FS			97	106	5.5					

CONNEALY ARMORY (RDF)
 CONNEALY BLACKHAWK 6198 18538178 (RDF)
 PRECIOUS OF CONANGA 380X
 GAR PROPHET (RDF)
 JMWA 420A 130X PROPHET 17976056
 JMWA 130X OF 615R MANDATE

PRODUCTION EPD						MATERNAL EPD							
CED	BW	WW	YW	ADG	YH	SC	DOC	HP	CEM	MM	MW	MH	\$EN
11	0.2	87	151	.30	1.3	.82	20	11.4	12	30	90	1.0	-37
FEET			CARCASS EPD				\$ VALUES						
CLAW	ANG	CWT	MRB	RE	FAT	\$M	\$W	\$F	\$G	\$B			
.60	.50	64	.65	.67	.006	61	93	115	55	170			

19 H&H UPWARD 518 (CAF) ANGUS
 Reg. No. 19433094 Tattoo 518 DOB 9/22/18 PB
 Consignor H&H FARM, BOILING SPRINGS NC, 704.472.1912

INDIVIDUAL PERFORMANCE										
	BW	WW	ADG	YW	YH	END WT	SC	U%IMF	URE	UFAT
Perf	71	730	2.86	1119	52.3	1208	40	3.24	12.0	.04
Ratio/FS			104	112	6.5					

CONNEALY ONWARD
 SITZ UPWARD 307R 14963730
 SITZ HENRIETTA PRIDE 81M
 BON VIEW NEW DESIGN 208
 H&H JENANNA 608 208 16231799
 IRVINGTON 2162 FORTE 3083

PRODUCTION EPD						MATERNAL EPD							
CED	BW	WW	YW	ADG	YH	SC	DOC	HP	CEM	MM	MW	MH	\$EN
7	1.4	55	99					8	31	32	.4	-11	
FEET			CARCASS EPD				\$ VALUES						
CLAW	ANG	CWT	MRB	RE	FAT	\$M	\$W	\$F	\$G	\$B			
		35	.42	.55	-.019	62	62	80	45	124			

20 H&H RAMPAGE 418 ANGUS
 Reg. No. 19401175 Tattoo 418 DOB 9/28/18 PB
 Consignor H&H FARM, BOILING SPRINGS NC, 704.472.1912

2.71INDIVIDUAL PERFORMANCE										
	BW	WW	ADG	YW	YH	END WT	SC	U%IMF	URE	UFAT
Perf	70	755	2.71	1024	50.8	1105	39	4.43	11.3	.16
Ratio/FS			99	102	5.9					

MCC DAYBREAK
 QUAKER HILL RAMPAGE 0A36 16925771 (RDF)
 QHF BLACKCAP 6E2 OF 4V16 4355
 R/M IRONSTONE 4047
 H&H JENANNA 211 17091432
 H&H JENANNA 104

PRODUCTION EPD						MATERNAL EPD							
CED	BW	WW	YW	ADG	YH	SC	DOC	HP	CEM	MM	MW	MH	\$EN
6	2.0	66	112					10	21				-20
FEET			CARCASS EPD				\$ VALUES						
CLAW	ANG	CWT	MRB	RE	FAT	\$M	\$W	\$F	\$G	\$B			
		43	.58	.79	-.016	62	59	87	55	143			

21 H&H PLAYBOOK 718 (CAF) ANGUS
 Reg. No. 19433542 Tattoo 718 DOB 9/28/18 PB
 Consignor H&H FARM, BOILING SPRINGS NC, 704.472.1912

INDIVIDUAL PERFORMANCE										
	BW	WW	ADG	YW	YH	END WT	SC	U%IMF	URE	UFAT
Perf	69	693	2.80	1051	51.0	1110	37	3.16	11.5	.13
Ratio/FS			102	105	6.0					

BASIN PAYWEIGHT 1682
 TEX PLAYBOOK 5437 18414912 (RDF)
 RITA 1C43 OF 9M26 COMPLETE
 TC TOTAL 410
 H&H MISS 209 16558540
 CALLAWAYS MISS 0719

PRODUCTION EPD						MATERNAL EPD							
CED	BW	WW	YW	ADG	YH	SC	DOC	HP	CEM	MM	MW	MH	\$EN
10	0.3	55	97	.22	.3	.67	25	10.6	13	31	30	.2	-6
FEET			CARCASS EPD				\$ VALUES						
CLAW	ANG	CWT	MRB	RE	FAT	\$M	\$W	\$F	\$G	\$B			
.55	.52	42	.41	.45	.023	67	65	88	39	126			

22 H&H STUD 1218 ANGUS
 Reg. No. 19401179 Tattoo 1218 DOB 10/7/18 PB
 Consignor H&H FARM, BOILING SPRINGS NC, 704.472.1912

INDIVIDUAL PERFORMANCE										
	BW	WW	ADG	YW	YH	END WT	SC	U%IMF	URE	UFAT
Perf	71	750	2.80	1051	51.0	1110	37	4.34	11.0	.09
Ratio/FS			102	105	6.0					

AAR TEN X 7008 SA
 EXAR STUD 4658B 17908266
 BOBO RITA 1559
 BON VIEW NEW DESIGN 878
 H&H FORTE 113 17866851
 IRVINGTON 2162 FORTE 3083

PRODUCTION EPD						MATERNAL EPD							
CED	BW	WW	YW	ADG	YH	SC	DOC	HP	CEM	MM	MW	MH	\$EN
9	1.2	49	90					12	23				-8
FEET			CARCASS EPD				\$ VALUES						
CLAW	ANG	CWT	MRB	RE	FAT	\$M	\$W	\$F	\$G	\$B			
		31	.70	.26	.005	45	45	84	52	136			

23 H&H PLAYBOOK 1318 ANGUS
 Reg. No. 19401180 Tattoo 1318 DOB 10/20/18 PB
 Consignor H&H FARM, BOILING SPRINGS NC, 704.472.1912

INDIVIDUAL PERFORMANCE										
	BW	WW	ADG	YW	YH	END WT	SC	U%IMF	URE	UFAT
Perf	69	789	3.16	1192	50.8	1220	39	4.49	13.7	.1
Ratio/FS			115	119	5.9					

BASIN PAYWEIGHT 1682
 TEX PLAYBOOK 5437 18414912 (RDF)
 RITA 1C43 OF 9M26 COMPLETE
 SITZ UPWARD 307R
 H&H FORTE 608 912 17434240
 H&H JENANNA 608 208

PRODUCTION EPD						MATERNAL EPD							
CED	BW	WW	YW	ADG	YH	SC	DOC	HP	CEM	MM	MW	MH	\$EN
11	0.5	58	103					12	36				-9
FEET			CARCASS EPD				\$ VALUES						
CLAW	ANG	CWT	MRB	RE	FAT	\$M	\$W	\$F	\$G	\$B			
		59	.59	.72	-.009	81	70	99	54	154			

27 PEDIGREE SAV 865 ANGUS
 Reg. No. 19505205 Tattoo 865 DOB 9/1/18 PB
 Consignor TOMMY MCGEE, LENOIR NC, 828.244.8827

INDIVIDUAL PERFORMANCE										
	BW	WW	ADG	YW	YH	END WT	SC	U%IMF	URE	UFAT
Perf	78		2.68	943	49.1	1080	37	3.99	10.4	.06
Ratio/FS			98	94	5.1					

SAV PIONEER 7301
 SAV PEDIGREE 4834 17921485
 SAV BLACKCAP MAY 4136
 TC FRANKLIN 619
 TC ERICA EILEEN 0226 16764339
 TC ERICA EILEEN 5512

PRODUCTION EPD						MATERNAL EPD							
CED	BW	WW	YW	ADG	YH	SC	DOC	HP	CEM	MM	MW	MH	\$EN
6	2.3	58	98					10	22				-9
FEET			CARCASS EPD				\$ VALUES						
CLAW	ANG	CWT	MRB	RE	FAT	\$M	\$W	\$F	\$G	\$B			
		42	.25	.77	-.005	56	52	76	38	114			

29 RESOURCE ESR 817 ANGUS
 Reg. No. 19506770 Tattoo 817 DOB 9/2/18 PB
 Consignor TOMMY MCGEE, LENOIR NC, 828.244.8827

INDIVIDUAL PERFORMANCE										
	BW	WW	ADG	YW	YH	END WT	SC	U%IMF	URE	UFAT
Perf	78		3.10	1014	49.7	1160	38	4.11	8.8	.12
Ratio/FS			113	101	5.3					

RITO 707 OF IDEAL 3407 7075
 SAV RESOURCE 1441 17016597 (RDF)
 SAV BLACKCAP MAY 4136
 RITO 707 OF IDEAL 3407 7075
 SAV POLLY 9940 16417322
 BR POLLY 8077-472

PRODUCTION EPD						MATERNAL EPD							
CED	BW	WW	YW	ADG	YH	SC	DOC	HP	CEM	MM	MW	MH	\$EN
-4	4.5	61	110	.22	.2	.99	23	11.0	-1	23	66	.1	-20
FEET			CARCASS EPD				\$ VALUES						
CLAW	ANG	CWT	MRB	RE	FAT	\$M	\$W	\$F	\$G	\$B			
.38	.38	54	.15	.54	.008	52	50	79	29	108			

32 OAF RAMPAGE 0806 ANGUS
 Reg. No. 19454261 Tattoo 0806 DOB 9/26/18 PB
 Consignor OVERCASH ANGUS, MOORESVILLE NC, 704.663.2547

INDIVIDUAL PERFORMANCE										
	BW	WW	ADG	YW	YH	END WT	SC	U%IMF	URE	UFAT
Perf	70	751	2.46	983	51.7	1065	37	3.01	11.2	.11
Ratio/FS			89	98	6.3					

MCC DAYBREAK
 QUAKER HILL RAMPAGE 0A36 16925771 (RDF)
 QHF BLACKCAP 6E2 OF4V16 4355
 SAV NET WORTH 4200
 OAF NET WORTH 4200 0107 17292384
 OAF COMMITMENT 0139

PRODUCTION EPD						MATERNAL EPD							
CED	BW	WW	YW	ADG	YH	SC	DOC	HP	CEM	MM	MW	MH	\$EN
8	1.8	67	116		.7	.85		11	24				-20
FEET			CARCASS EPD				\$ VALUES						
CLAW	ANG	CWT	MRB	RE	FAT	\$M	\$W	\$F	\$G	\$B			
		58	.34	1.06	-.030	65	63	101	49	150			

33 OAF FORTRESS 0802 ANGUS
 Reg. No. 19454257 Tattoo 0802 DOB 10/4/18 PB
 Consignor OVERCASH ANGUS, MOORESVILLE NC, 704.663.2547

INDIVIDUAL PERFORMANCE										
	BW	WW	ADG	YW	YH	END WT	SC	U%IMF	URE	UFAT
Perf	70	775	3.38	1125	49.9	1133	39	2.95	11.1	.16
Ratio/FS			123	112	5.4					

CONNEALY CONSENSUS
 KCF BENNETT FORTRESS 17259012 (RDF)
 THOMAS PATRICIA 9705
 SYDGEN CC&7
 OAF CC&7 0607 18859722
 OAF SITZ UPWARD 0407

PRODUCTION EPD						MATERNAL EPD							
CED	BW	WW	YW	ADG	YH	SC	DOC	HP	CEM	MM	MW	MH	\$EN
7	1.7	69	121		.5				10	29			-17
FEET		CARCASS EPD				\$ VALUES							
CLAW	ANG	CWT	MRB	RE	FAT	\$M	\$W	\$F	\$G	\$B			
						65	70						

34 OAF RAMPAGE 0822 ANGUS
 Reg. No. 19454252 Tattoo 0822 DOB 10/21/18 PB
 Consignor OVERCASH ANGUS, MOORESVILLE NC, 704.663.2547

INDIVIDUAL PERFORMANCE										
	BW	WW	ADG	YW	YH	END WT	SC	U%IMF	URE	UFAT
Perf	72	714	2.79	985	50.8	1005	39	3.57	10.7	.1
Ratio/FS			101	98	5.9					

MCC DAYBREAK
 QUAKER HILL RAMPAGE 0A36 16925771 (RDF)
 QQHF BLACKCAP 6E2 OF4V16 4355
 HSAF BANDO 1961
 OAF BANDO 1961 0029 16980753
 OAF FAR SOLUTION 0713

PRODUCTION EPD						MATERNAL EPD							
CED	BW	WW	YW	ADG	YH	SC	DOC	HP	CEM	MM	MW	MH	\$EN
8	1.2	62	107		.7	.84	3		10	23			-13
FEET		CARCASS EPD				\$ VALUES							
CLAW	ANG	CWT	MRB	RE	FAT	\$M	\$W	\$F	\$G	\$B			
		43	.54	.84	-.032	67	59	92	56	147			

35 SFA FF24 FORTRESS OF VZ63 (AN GS) ANGUS
 Reg. No. 19441493 Tattoo FF24 DOB 9/7/18 PB
 Consignor SHUFFLER FARM, UNION GROVE NC, 704.876.9895

INDIVIDUAL PERFORMANCE										
	BW	WW	ADG	YW	YH	END WT	SC	U%IMF	URE	UFAT
Perf	95	772	2.44	1052	49.8	1188	40	4.13	11.9	.08
Ratio/FS			89	105	5.4					

CONNEALY CONSENSUS
 KCF BENNETT FORTRESS 17259012 (RDF)
 THOMAS PATRICIA 9705
 WRA VINDICATOR W2
 SFA RITA VZ63 17533097
 SFA RITA AW23

PRODUCTION EPD						MATERNAL EPD							
CED	BW	WW	YW	ADG	YH	SC	DOC	HP	CEM	MM	MW	MH	\$EN
0	2.9	69	116	.22	.3	.66	2	13.4	12	28	36	0	-9
FEET		CARCASS EPD				\$ VALUES							
CLAW	ANG	CWT	MRB	RE	FAT	\$M	\$W	\$F	\$G	\$B			
.55	.56	43	.56	.42	.014	67	77	71	46	118			

38 SFA NF42 NIAGARA OF DC10 (AN GS) ANGUS
 Reg. No. 19447051 Tattoo NF42 DOB 9/16/18 PB
 Consignor SHUFFLER FARM, UNION GROVE NC, 704.876.9895

INDIVIDUAL PERFORMANCE										
	BW	WW	ADG	YW	YH	END WT	SC	U%IMF	URE	UFAT
Perf	83	696	3.08	1040	49.5	1108	36	3.00	10.5	.08
Ratio/FS			112	104	5.2					

HOOVER DAM
 SS NIAGARA Z29 17287387 (RDF)
 JET SS X144
 JINDRA DOUBLE VISION
 SFA RITA DC10 18475738
 SFA RITA VZ63

PRODUCTION EPD						MATERNAL EPD							
CED	BW	WW	YW	ADG	YH	SC	DOC	HP	CEM	MM	MW	MH	\$EN
-4	1.6	70	133	.40	.5	.32	19	11.9	3	27	77	.5	-28
FEET		CARCASS EPD				\$ VALUES							
CLAW	ANG	CWT	MRB	RE	FAT	\$M	\$W	\$F	\$G	\$B			
.46	.34	61	.44	.87	.025	56	72	117	46	162			

40 RAINBOW INSIGHT 997 (AN GS) ANGUS
 Reg. No. 19495351 Tattoo 997 DOB 10/6/18 PB
 Consignor RAINBOW ANGUS, PINEY FLATS TN, 423.336.5631

INDIVIDUAL PERFORMANCE										
	BW	WW	ADG	YW	YH	END WT	SC	U%IMF	URE	UFAT
Perf	78		2.89	972	50.9	1028	37	3.08	11.1	.1
Ratio/FS			105	97	6.0					

SAV BRILLIANCE 8077
 PVF INSIGHT 0129
 PVF MISSIE 790
 SAV NET WORTH 4200
 RAINBOW BLACKBIRD 232 17177189
 RAINBOW BLACKBIRD 207

PRODUCTION EPD						MATERNAL EPD							
CED	BW	WW	YW	ADG	YH	SC	DOC	HP	CEM	MM	MW	MH	\$EN
2	4.0	58	98	.23	.6	1.17	-3	4.7	10	29	34	.4	-8
FEET		CARCASS EPD				\$ VALUES							
CLAW	ANG	CWT	MRB	RE	FAT	\$M	\$W	\$F	\$G	\$B			
.44	.55	55	-.04	1.27	-.003	40	60	109	31	140			

41 WILLIAMS ACCLAIM 504-429 (HD50K) ANGUS
 Reg. No. 19233642 Tattoo 8429 DOB 9/7/18 PB
 Consignor WILLIAMS ANGUS, GRAY TN, 423.341.7044

INDIVIDUAL PERFORMANCE										
	BW	WW	ADG	YW	YH	END WT	SC	U%IMF	URE	UFAT
Perf	78	605	3.04	1029	50.8	1165	38	4.3	10.8	.13
Ratio/FS			111	103	5.9					

JINDRA 3RD DIMENSION
 JINDRA ACCLAIM 1792810 (RDF)
 JINDRA BLACKBIRD LASSY 1111
 MCC DAYBREAK
 GOODE DAYBREAK 2112 17476340
 GOODE OBJECTIVE 0252

PRODUCTION EPD						MATERNAL EPD							
CED	BW	WW	YW	ADG	YH	SC	DOC	HP	CEM	MM	MW	MH	\$EN
11	1.1	66	136	.35	1.4	.23	16	15.2	14	37	95	1.1	-42
FEET		CARCASS EPD				\$ VALUES							
CLAW	ANG	CWT	MRB	RE	FAT	\$M	\$W	\$F	\$G	\$B			
.55	.60	52	.68	.77	-.027	47	73	110	61	171			

42 WILLIAMS LOMBARDI 432-853 (HD50K) ANGUS
 Reg. No. 19229870 Tattoo 8853 DOB 9/7/18 PB
 Consignor WILLIAMS ANGUS, GRAY TN, 423.341.7044

INDIVIDUAL PERFORMANCE										
	BW	WW	ADG	YW	YH	END WT	SC	U%IMF	URE	UFAT
Perf	86	645	2.72	1002	49.3	1133	40	4.00	9.5	.06
Ratio/FS			99	100	5.1					

VAR DISCOVERY 2240 (RDF)
 ECO LOMBARDI 1512 18267894
 RB LADY 7125-890-2170
 GAR PROPHET (RDF)
 WILLIAMS PROP KARAMA 908 17761239
 WILLIAMS KARAMA 159

PRODUCTION EPD						MATERNAL EPD							
CED	BW	WW	YW	ADG	YH	SC	DOC	HP	CEM	MM	MW	MH	\$EN
10	0.9	90	154	.25	.9	1.20	27	13.7	12	23	72	.7	-23
FEET		CARCASS EPD				\$ VALUES							
CLAW	ANG	CWT	MRB	RE	FAT	\$M	\$W	\$F	\$G	\$B			
.41	.47	76	.91	.78	.007	89	96	108	69	177			

51 BCIP EPIC FD67 (NHF) SIMMENTAL
 Reg. No. 3526751 Tattoo FD491 DOB 9/4/18 25
 Consignor BROADWAY CATTLE FARM, MONROE NC, 704.579.3514

INDIVIDUAL PERFORMANCE										
	BW	WW	ADG	YW	YH	END WT	SC	U%IMF	URE	UFAT
Perf	75	737	2.92	1193	53.2	1293	37	2.39	10.97	0.1
Ratio/FS			100	105	7.1					

VARILEK PRODUCT 2010 04
 EF EPIC 4631 3363448
 ZEBO QUEEN 1072
 CAJS HULK HOGAN
 BCIV MISS ROSEBUD OF 67 3280666
 EBS MISS ROSEBUD 074-491

PRODUCTION EPD						MATERNAL EPD				
CE	BW	WW	YW	ADG	MCE	MM	MWW	STAY	DOC	
15.1	-1.7	89.6	150	.38	10.5	23.5	68.3	8.7	12.4	
CARCASS EPD				\$ VALUES						
CWT	YG	MARB	B FAT	REA	SHR	API	TI			
66.6	.11	.59	.019	.55		145.1	93.7			

54 RFF ACE OF DIAMONDS F02 (HOM. BLACK) SIMMENTAL
 Reg. No. 3570092 Tattoo F02 DOB 9/9/18 50
 Consignor RUCKER FAMILY FARM, HAMPTONVILLE NC, 336.468.31675

INDIVIDUAL PERFORMANCE										
	BW	WW	ADG	YW	YH	END WT	SC	U%IMF	URE	UFAT
Perf	80	641	3.35	1112	52.3	1253	39	3.54	11.55	.13
Ratio/FS			115	98	6.7					

TNT TUITION U238
 W/C UNITED 956Y 2614725
 MISS WERNING 956W
 B/R NEW DAY 454
 RFF BLACK DIAMOND A4 2837237
 RFF BELLA X3

PRODUCTION EPD						MATERNAL EPD				
CE	BW	WW	YW	ADG	MCE	MM	MWW	STAY	DOC	
10.0	1.7	76.5	123.3	.29	5.5	21.3	59.5	9.4	9.3	
CARCASS EPD				\$ VALUES						
CWT	YG	MARB	B FAT	REA	SHR	API	TI			
37.5	-20	.30	-0.29	.78	-16	118.5	76.4			

43 WILLIAMS ACCLAIM 603-920 (HD50K) ANGUS
 Reg. No. 19233533 Tattoo 8920 DOB 9/8/18 PB
 Consignor WILLIAMS ANGUS, GRAY TN, 423.341.7044

INDIVIDUAL PERFORMANCE										
	BW	WW	ADG	YW	YH	END WT	SC	U%IMF	URE	UFAT
Perf	85	650	2.98	1123	49.3	1200	39	3.45	12.4	.13
Ratio/FS			109	112	5.1					

JINDRA 3RD DIMENSION
 JINDRA ACCLAIM 17972810 (RDF)
 JINDRA BLACKBIRD LASSY 1111
 QUAKER HILL RAMPAGE 0A36 (RDF)
 WILLIAMS RAM ERICA 402-886 18466371
 WILLIAMS PROP ERICA 255-139

PRODUCTION EPD						MATERNAL EPD							
CED	BW	WW	YW	ADG	YH	SC	DOC	HP	CEM	MM	MW	MH	\$EN
8	1.3	87	161	.34	1.1	.41	7	15.1	11	27	128	1	-52
FEET		CARCASS EPD				\$ VALUES							
CLAW	ANG	CWT	MRB	RE	FAT	\$M	\$W	\$F	\$G	\$B			
.54	.50	74	.65	.81	-0.07	47	86	133	58	192			

53 F5 SIMMENTAL
 Reg. No. 3571834 Tattoo F5 DOB 9/5/18 25
 Consignor KEZIAH FARMS, MONROE NC, 704.242.2543

INDIVIDUAL PERFORMANCE										
	BW	WW	ADG	YW	YH	END WT	SC	U%IMF	URE	UFAT
Perf	78		2.96	1133	51.7	1220	36	4.13	10.68	.1
Ratio/FS			101	100	6.4					

VAR DISCOVERY 2240
 ECO LOMBARDI 1512 3482750
 RB LADY 7125-890-2170
 POWER ENTENSE
 BCIV MARK OF DESTINY 3312780
 BCIV MARK OF EXPECTATION

PRODUCTION EPD						MATERNAL EPD				
CE	BW	WW	YW	ADG	MCE	MM	MWW	STAY	DOC	
11.2	0.8	73.8	119.7	.29	5.8	25.4	62.2	12.1	12.8	
CARCASS EPD				\$ VALUES						
CWT	YG	MARB	B FAT	REA	SHR	API	TI			
54.1	.06	.83	.007	.45	-.19	148.3	86.7			

55 RFF KING OF HEARTS F3 (HOM. BLACK) SIMMENTAL
 Reg. No. 3570091 Tattoo F3 DOB 9/17/18 PB
 Consignor RUCKER FAMILY FARM, HAMPTONVILLE NC, 336.468.1675

INDIVIDUAL PERFORMANCE										
	BW	WW	ADG	YW	YH	END WT	SC	U%IMF	URE	UFAT
Perf	85	742	3.06	1179	52.0	1283	40	3.1	11.274	.09
Ratio/FS			105	104	6.5					

MR NLC UPGRADE U8676
 GIBBS 0601X RAISINCAIN 2602502
 ASR SWEET DREAMS M229
 F NICHOLS BLACKADVANTAGE
 RFF MISS MARCELLA 2240666
 RFF BOBBIE SOX

PRODUCTION EPD						MATERNAL EPD				
CE	BW	WW	YW	ADG	MCE	MM	MWW	STAY	DOC	
5.9	3.9	80.9	125.7	.28	2.7	22.9	63.3	17.3	11.6	
CARCASS EPD				\$ VALUES						
CWT	YG	MARB	B FAT	REA	SHR	API	TI			
39.7	-.59	.02	-.151	1.04	-.19	123.5	75.0			

56 SFS FORTRESS XF28 SIMMENTAL
 Reg. No. 3559917 Tattoo XF28 DOB 9/8/18 50
 Consignor SHUFFLER FARM SIMMENTALS, UNION GROVE NC, 704.876.9895

INDIVIDUAL PERFORMANCE										
Perf	BW	WW	ADG	YW	YH	END WT	SC	U%IMF	URE	UFAT
	78	726	2.89	1147	52.8	1228	40	3.09	.07	10.63
Ratio/FS			99	101	6.9					

CONNELLY CONSENSUS
 KCF BENNETT FORTRESS 3096210
 THOMAS PATRICIA 9705
 JBS BIG CASINO 336Y
 SFS LENA D04 3226740
 SFS LENA A39

PRODUCTION EPD					MATERNAL EPD				
CE	BW	WW	YW	ADG	MCE	MM	MWW	STAY	DOC
15.6	-0.5	88.6	139.1	.32	8.8	22.1	66.4	15.0	14.1
CARCASS EPD					\$ VALUES				
CWT	YG	MARB	B FAT	REA	SHR	API	TI		
43.6	-.32	.25	-.075	.86		143.4	86.5		

57 SFS PRIDE F60 SIMMENTAL
 Reg. No. 3559925 Tattoo SFF60 DOB 10/2/18 PB
 Consignor SHUFFLER FARM SIMMENTALS, UNION GROVE NC, 704.876.9895

INDIVIDUAL PERFORMANCE										
Perf	BW	WW	ADG	YW	YH	END WT	SC	U%IMF	URE	UFAT
	87	709	2.90	1115	51.8	1148	38	3.27	10.92	.09
Ratio/FS			99	99	6.4					

TNT TANKER U263
 TNT PRIDE C232 3044024
 TNT MISS Z1
 SFS SURE BET A64
 SFS ELLIE C64 3099655
 SFS ELLIE X65

PRODUCTION EPD					MATERNAL EPD				
CE	BW	WW	YW	ADG	MCE	MM	MWW	STAY	DOC
11.2	1.9	81.5	122.5	.26	7.3	22.2	62.8	19.9	12.5
CARCASS EPD					\$ VALUES				
CWT	YG	MARB	B FAT	REA	SHR	API	TI		
40.6	-.54	.04	-.128	1.10	-.39	139.2	78.6		

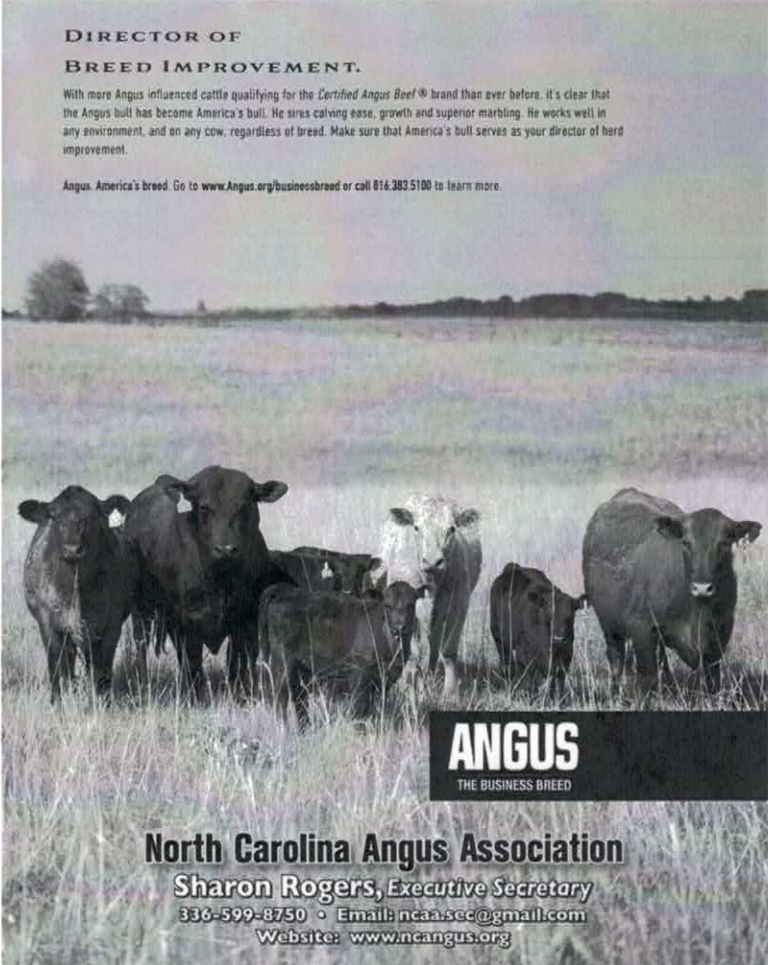
TERMS AND CONDITIONS OF SALE

- The terms of the sale are cash.
- All animals will be sold at public auction to the highest bidder.
- The auctioneer will settle any dispute as to bids. Cattle will remain property of owner until sold.
- Each animal becomes the property of the purchaser as soon as sold but will not be released until settled for. Animals will be bed and cared for overnight but at buyer's risk.
- Certificates of registry and transfer will be furnished to the buyer by the respective breed association.
- All bulls are guaranteed to be in good health and sound. All bulls have been tested within the last thirty days and are negative for TB and Bangs. Bulls are eligible for shipment to any state.
- All bulls are guaranteed breeders if properly fed and managed. Rules and Regulations adopted by the respective breed association shall determine whether an animal is a breeder. Each buyer will be furnished a written statement which specifies the procedure to follow in case a bull is claimed to be a non-breeder.
- The auctioneer will call any changes or corrections to the information in the catalog, and these will take precedence and supersede any other statements.
- Neither the sale manager nor any person connected with the management of the sale assumes any liability, legal or otherwise. The Association acts as an agent only and will not be responsible for contract.
- All persons attending sales do so at their own risk. Neither the sale manager nor any person connected with the management of the sale assumes any responsibility for the safety of the building or premises or for the behavior of the animals.

DIRECTOR OF BREED IMPROVEMENT.

With more Angus influenced cattle qualifying for the Certified Angus Beef® brand than ever before, it's clear that the Angus bull has become America's bull. He sires calving ease, growth and superior marbling. He works well in any environment, and on any cow, regardless of breed. Make sure that America's bull serves as your director of herd improvement.

Angus. America's breed. Go to www.Angus.org/businessbreed or call 816.383.5100 to learn more.



ANGUS
THE BUSINESS BREED

North Carolina Angus Association
 Sharon Rogers, Executive Secretary
 336-599-8750 • Email: ncaa.sec@gmail.com
 Website: www.ncangus.org

lot	sire	hps	color	FS	ADG	WT365	SC	BW	WW	YW	Milk
ANGUS											
1	PVF INSIGHT 0129	P	B	5.6	B	B	B	C	A	A	B
2	EWA HIGH WEIGH 3123	P	B	5.3	C	C	A	B	C	B	B
4	EWA HIGH WEIGH 3123	P	B	5.1	C	B	B	B	A	A	B
5	GDAR LEUPOLD 298	P	B	5.4	A	A	C	B	B	B	A
6	QUAKER HILL RAMPAGE 0A36	P	B	5.7	A	A	C	C	A	A	C
7	THOMAS TOP HAND 0536	P	B	6.2	A	A	C	A	A	A	B
8	RB TOUR OF DUTY 177	P	B	6.7	A	A	B	C	B	B	A
15	3F EPIC 4631	P	B	5.7	B	B	A	B	A	A	B
17	CONNELLY LEGENDARY 644L	P	B	5.3	A	B	B	A	A	A	B
18	CONNELLY BLACKHAWK 6198	P	B	5.1	B	C	C	B	A	A	A
19	SITZ UPWARD 307R	P	B	5.5	C	A	A	B	B	B	A
20	QUAKER HILL RAMPAGE 0A36	P	B	6.6	B	A	A	B	A	A	C
21	TEX PALAYBOOK 5437	P	B	5.9	B	B	A	A	B	B	A
22	EXAR STUD 4658B	P	B	6.0	B	A	C	B	B	B	B
23	TEX PLAYBOOK 5437	P	B	5.9	A	A	A	B	B	A	A
27	SAV PEDIGREE 4834	P	B	5.1	B	C	C	C	B	B	B
29	SAV RESOURCE 1441	P	B	5.3	A	B	B	C	A	A	B
32	QUAKER HILL RAMPAGAE 0A36	P	B	6.3	C	B	C	B	A	A	B
33	KCF BENNETT FORTRESS	P	B	5.4	A	A	A	B	A	A	A
34	QUAKER HILL RAMPAGE 0A36	P	B	5.9	B	B	A	B	A	A	B
35	KCF BENNETT FORTRESS	P	B	5.4	C	A	A	C	A	A	A
38	SS NIAGARA Z29	P	B	5.2	A	B	C	B	A	A	A
40	PVF INSIGHT 0129	P	B	6.0	B	B	C	B	B	B	B
41	JINDA ACCLAIM	P	B	5.9	A	B	B	B	A	A	A
42	ECO LOMBARDI 1512	P	B	5.1	B	B	A	B	A	A	B
43	JINDA ACCLAIM	P	B	5.1	A	A	A	B	A	A	B
SIMMENTAL											
51	EF EPIC 4631	P	B	7.1	B	A	C	A	A	A	A
53	ECO LOMBARDI 1512	P	B	6.4	B	B	C	B	A	A	A
54	W/C UNITED 956Y	P	B	6.7	A	C	B	C	A	A	A
55	GIBBS 0601X RAISINCAIN	P	BW	6.5	A	A	A	C	A	A	B
56	KCF BENNETT FORTRESS	S	BW	6.9	C	B	A	A	A	A	B
57	TNT PRIDE C232	P	B	6.4	B	B	B	B	A	A	B

COLUMN HEADINGS: For ABC Chart

HPS H = Horned (may be dehorned) P = Polled S = Scurred

COLOR Code for color of bull: B = Black, RW= Red White Face, R=Red

FS Last hip height converted to Frame Score as shown below for 365-day hip height of bulls:

4 = 47" 5 = 49" 6 = 51" 7 = 53" 8 = 55"

ADG Average Daily Gain while on test

WT365 Adjusted 365-Day Yearling Weight

SCROTAL Based on Scrotal Circumference measured on

Rankings for ADG, WT365, and SCROTAL are done within breed group and age group.

A = Highest 1/3 within breed and age group

B = Middle 1/3 within breed and age group

C = Lowest 1/3 with breed and age group

EPD_(B, W, Y, M) Expected Progeny Differences calculated by respective breed association.

Rankings for Birth Weight (B)

A = Indicates the bull is in the lightest 1/3 of bulls of a similar age in his breed

B = Indicates the bull is in the middle 1/3 of bulls of a similar age in his breed

C = Indicates the bull is in the heaviest 1/3 of bulls of a similar age in his breed

Rankings for Weaning Weight (W), Yearling Weight (Y), and Maternal Milk (M)

A = Indicates the bull is in the highest 1/3 of bulls of a similar age in his breed

B = Indicates the bull is in the middle 1/3 of bulls of a similar age in his breed

C = Indicates the bull is in the lowest 1/3 of bulls of a similar age in his breed

KEVIN CAMP

Territory Business Manager

2573 Cattle Creek Farm Road
Newton, NC 28658

662-983-9288

kevin.camp@zoetis.com

BOVI-SHIELD GOLD
ONE SHOT

**IS YOUR VACCINE
HIDING SOMETHING?**

The last thing you want is something sneaking into your herd. BOVI-SHIELD GOLD ONE SHOT® is the only combination vaccine that prevents three important BRD conditions while also providing the highest available protection against *Mannheimia haemolytica*. That's something Pyramid® 5 + Prespense® SQ and Vista® Once SQ can't claim. So use BOVI-SHIELD GOLD ONE SHOT and get complete calf protection that's both convenient and uncompromised.

Contact your Zoetis representative or visit UncompromisedProtection.com to save yourself a herd of problems.

All trademarks are the property of Zoetis Services LLC or a related company or a licensor unless otherwise noted. Pyramid® and Prespense® are registered trademarks of Boehringer Ingelheim Vetmedica, Inc. Vista® is the registered trademark of Intervet Inc. or an affiliate.
© 2017 Zoetis Services LLC. All rights reserved. BSO-00025

zoetis

OPTIMIZE YOUR HERD'S GENETIC POTENTIAL

SOUTHERN STATES® GENETIC EXPRESSION® BEEF NUTRITION PROGRAM

AREA FEED REPS:

DOUG ROWELL

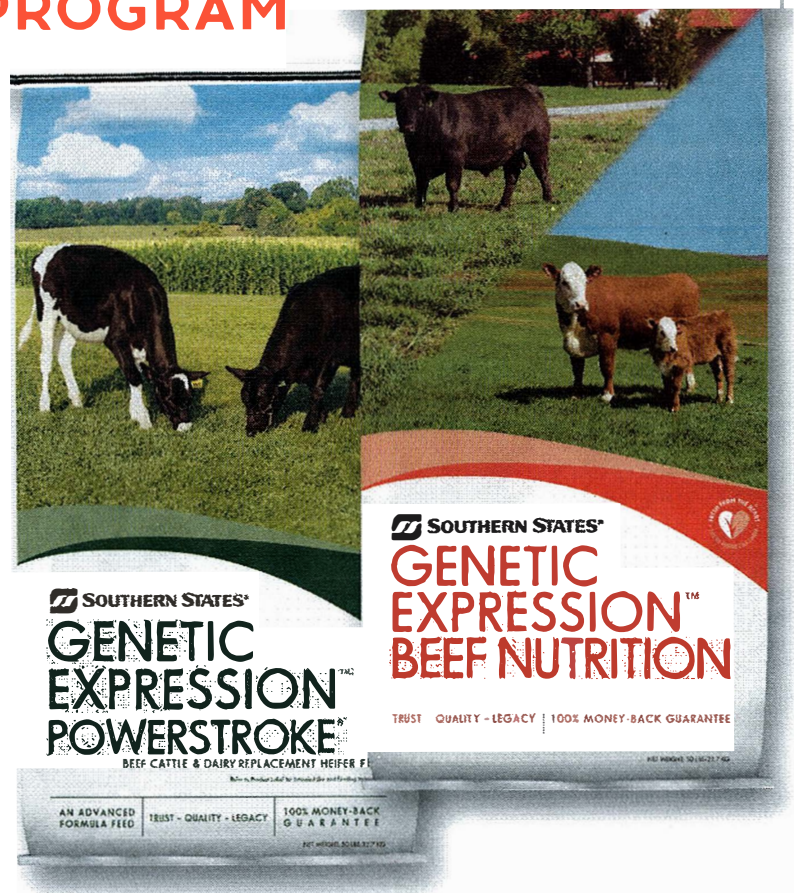
704-787-6819

douglas_rowell@cargill.com

SUMMER SANTANA

919-609-3953

summer_santana@cargill.com



BUILD YOUR HERD POWER

- > Nutrition based on life stage and management needs
- > Can be hand-fed or self-fed to meet your management needs
- > Incorporates organic selenium, Zinpro Availa 4®, Intellibond® and yeast compounds to support gut health, immunity, reproduction and strong hooves

If you have questions or comments, please contact Southern_States_Feed_Questions@cargill.com.

Genetic Expression®, Fresh From the Heart Fresh From the Farm® and PowerStroke® are registered trademarks of Cargill, Incorporated. Southern States® is a registered trademark of Southern States Cooperative, Incorporated. Zin pro Availa 4® is a registered trademark of Zinpro Corporation. Intellibond® is a registered trademark of Micronutrients USA LLC.

©2019 Cargill, Incorporated. All rights reserved.

It's a Fact!

The Most Profitable Calf
is the Crossbred Calf.

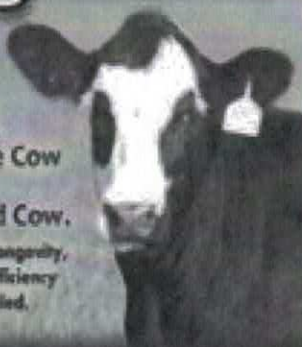
Its superior performance, efficiency and
combination of carcass traits
cannot be matched.



SimAngus™

The Most
Profitable Cow
is the
Crossbred Cow.

Her superior longevity,
fertility and efficiency
cannot be rivaled.



Don't take
our word
for it.

The data provided by the USDA through the Meat Animal Research Center shows the clear choice to maximize profit. SimAngus™ provides the hybrid vigor and complementarity necessary to maximize profit both in the cowherd and feeder calf scenario.

NC Simmental Association

1341 Highway 21

Hamptonville, NC 27020

www.ncsimmental.com

Email: ncsa@yadtel.net

336-468-1679

American Simmental Association

1 Genetics Way

Bozeman, MT 59718

www.simmental.org

406-587-4531

ROCKY SUMMIT 1758

BORN 11/03/2017

REGISTRATION No AAA 19142914

SEMEN NOW AVAILABLE

ROCKY SUMMIT 1758 IS PROJECTED TO BE THE #1 BULL IN THE SUPPLEMENTAL BULL DIRECTORY FOR LIFE GROWTH POINTS OF BW, WW, YW, MW, MH AND CW

WW - 81 (2%) YW - 146 (1%) MW - 139 (1%) MH - 1.2 (1%)

VISIT WWW.RSBULLS.COM

SEMEN CAN BE ORDERED ONLINE
OR BY EMAIL - THRAYNOR@VERIZON.NET
OR BY PHONE - TIM RAYNOR 214-277-4088

SEMEN CAN ALSO BE PICKED UP AT OUR FARM
IN NORLINA, NC OR DELIVERED BY OUR TRUCKS
TO YOUR FARM IN NC, SC, VA AND TN



ROCK HILL CATTLE COMPANY

SEMEN COLLECTED AND SHIPPED BY

**NORTH AMERICAN
BREEDERS**
A Division of Herbest Angus Farms Inc.



Inc. / Auctioneers

NCAL 1468 NC#C4264 VAL 146 SCAL 3895



3200 NC Hwy. 58 – Warrenton, NC

E. B. Harris Inc./Auctioneers conduct sales of farm, construction & logging equipment, livestock, & real estate. We are a name both buyer and seller can trust. If you are considering an auction or buying equipment or cattle, be sure to contact us for more information about our services. We always appreciate your business. Contact ebharris@ebharris.com to be added to our e-mail list.

Whether you are looking for someone to haul your livestock from one location to another, give an opinion on ways to improve your herd, or need livestock supplies such as gates, corral panels, hay rings, mineral feeders, Hydra-Bed, Diamond W Corral, Safety Zone Calf Catcher, W-W or Ranch Hand truck accessories, you should be able to find it @ E. B. Harris Livestock

Upcoming Sales:

December 2019 – Farm Equipment – Keeling, VA

December 2019 – Farm Equipment – Canetoe, NC

Dec/Jan. Farm Equipment – Sampson County, NC (Garland)

January 2020 – Farm Equipment – Burlington, NC

January 2020 – Cattle Auction – Oxford, NC

February/March – 2020 – Real Estate – Mocksville, NC

Visit www.ebharris.com for information on all of our upcoming sales

We are located @ 3200 NC Hwy. 58 – Warrenton, NC 27589. Give us a call.

E. B. 252-257-2140 or 252-430-9595 Shane 919-497-7990.

WHY HEREFORD?

Because of the Hereford Influenced Female Advantage!

- Desirable Disposition
- Increased Fertility
- Feed Efficiency
- Increased Cow Longevity
- Influence in Baldy Calves

Do You Still Need a Hereford Bull?

Come to the N.C. BCIP Butner Bull Test Sale

12:00 noon • December 12, 2019 • Granville County Livestock Arena • Oxford, N.C.

or Contact One of these Hereford Breeders:

Jim Davis • Terrace Farms -- 336-853-8019 (home) • 336-247-1554 (cell) • jdavis101@yahoo.com

Wayne Mitchem • Mitchem's Farm 3C -- 704-472-4369 • mitchemsfarm@bellsouth.net

Bryson Westbrook • 4B Farm LLC -- 908-230-4878 • brysonw@thewestbrookco.com

John Wheeler • Double J Farm LLC -- 910-489-0024 • doublejfarmll@yahoo.com • www.doublejfarmllc.com



Are You A Member? You Should Be!

NORTH CAROLINA CATTLEMEN'S ASSOCIATION Membership Application

Name _____

Address _____

City, State, Zip _____

County _____ Phone No. _____ Email _____

Please check type of membership you want:

- NCCA (1 year) - \$25.00
- NCCA (5 years) - \$100.00
- NCCA (Lifetime) - \$500.00
- NCCA Student Membership - \$10.00

Payment Options:

- Check (made payable to N. C. Cattlemen's Association)
- MasterCard
- Visa
- Discover

Card Number _____ Exp. Date _____ 3-digit # on back of card _____

Name as it Appears on Card _____

Please return with payment to: N. C. Cattlemen's Association
 2228 N. Main Street Fuquay-Varina, NC 27526
 (919) 552-9111 Fax (919) 552-9216
 Website: www.nccattle.com

THE BEEF CHECKOFF Now Working Twice as Hard for YOU - Nationally and at Home

Have You Sold Cattle on the Farm?

If so, be sure to send in your checkoff investment.

- It's the LAW to pay the National \$1.00 Checkoff per head on all cattle sold.
- It's a wise investment to contribute to the North Carolina Cattle Industry \$1.00 Assessment per head on all cattle sold.

The National (\$1.00) Checkoff and the State (\$1.00) Assessment provides funds needed to help promote beef and the cattle industry. The Beef Checkoff program is run by producers like you and has played a vital role in increasing the demand for beef. The North Carolina Cattle Industry Assessment supports youth activities, promotion, issues management, research, and education.

*North Carolina
 Cattlemen's Beef Council*



2228 N. Main Street • Fuquay-Varina, NC 27526
 (919) 552-9111 • Fax: (919) 552-9216
 Email: ncbeef@nccattle.com



The Carolina Cattle Connection

The Voice of Cattlemen in
 North and South Carolina

Standard Advertising:

Full Page (10 1/8" W x 12 1/2" D)	\$500.00
3/4 Page (10 1/8" W x 10 1/2" D)	\$425.00
JUNIOR PAGE (8 1/2" W x 11" D)	\$400.00
1/2 Page (10 1/8" W x 6 1/4" D or 4 7/8" W x 12 1/2" D)	\$325.00
1/4 Page (4 7/8" W x 6 1/4" D or 2 1/4" W x 12 1/2" D)	\$175.00
1/8 Page (4 7/8" W x 3 3/4" D or 2 1/4" W x 6 1/4" D)	\$150.00
Column Inch (2 1/4" W x 1" D)	\$ 35.00

Deadline Date: 1st of month prior to issue

The Carolina Cattle Connection
 2228 N. Main Street

Fuquay-Varina, NC 27526
 (919) 552-9111 Fax: (919) 552-9216

Casey Hinnant, Editor
 Email: mail@nccattle.com



North Carolina Cattlemen's Association
2228 North Main Street
Fuquay-Varina, NC 27526

40th Annual NC BCIP Waynesville Bull Test Sale
Saturday December 7, 2019
11:00 am

SALE MANAGER: NC Cattlemen's Association, Mr. Bryan Blinson, Executive Director
2228 North Main Street, Fuquay-Varina, NC 27526
Phone: 919/552-9111

TEST STATION MGR: Kyle Miller, 828/456-3943, NCDA Mountain Research Station

TEST AND SALE SPONSORS:

NC Beef Cattle Improvement Program
North Carolina Cattlemen's Association
North Carolina Cooperative Extension
Mountain Research Station of NCDA

SALE DAY PHONE: 919.422.9108 or 919.795.9696

ASSISTANCE: You may call Gary Gregory at 919/515-4027 for more information or to submit a bid on a bull in the event you cannot attend the sale.

COMPLETE PEDIGREES AVAILABLE UPON REQUEST FROM NC BCIP-919/515-4027

DIRECTIONS TO WNC REGIONAL LIVESTOCK CENTER, CANTON NC. I-40 East Take Exit 33(Newfound Rd) At the Stop Sign, turn left on Newfound Rd Travel 0.2 of a mile take first left on Freedom Drive travel 0.9 mile to stop sign at bottom of hill make a left on Beaverdam Rd travel 0.3 mile Stock Drive is on the right. I-40 West take Exit 33 (Newfound Rd) At Stop Sign, Continue Straight on to Freedom Drive. Travel 0.9 mile to Stop Sign. Turn Left on to Beaverdam Rd. Travel 0.# mile to Stock Dr on the Right.
